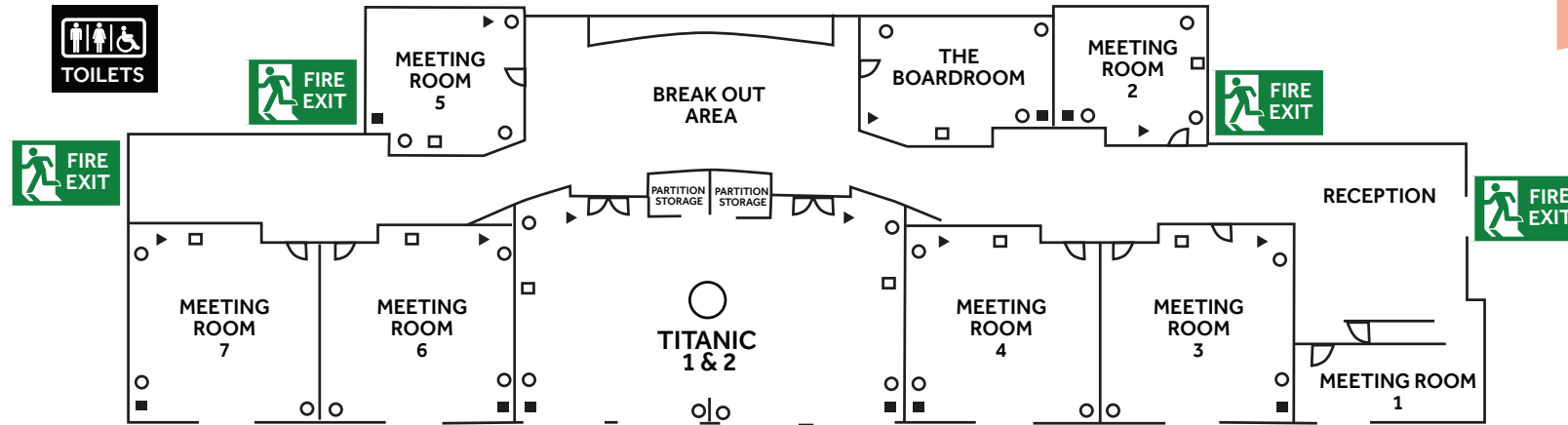


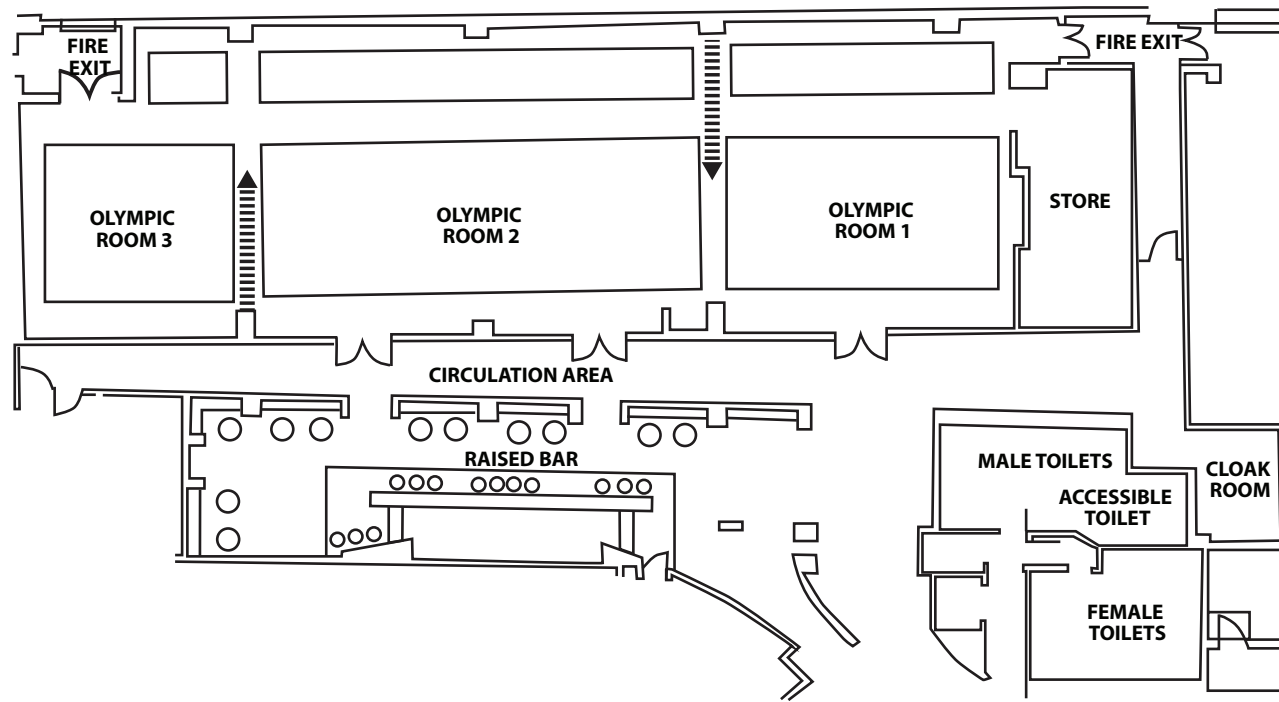
THE MEETING AND EVENTS CENTRE CLAYTON HOTEL BELFAST



Room	Board-room	Hollow Square	Cabaret (7)	Class-room	Theatre	U-Shape	Reception Style	Banqueting (12)	Size (m2)	Dimensions	Height
Meeting Room 1	4	–	–	–	–	–	–	–	9.59	2.74 x 3.50	3 Metres
Meeting Room 2	10	12	7	8	21	10	5	12	29.94	6.05 x 4.95	3 Metres
Meeting Room 3	14	24	21	20	44	18	35	36	50.75	7 x 7.25	3 Metres
Meeting Room 4	14	24	21	20	44	18	35	36	50.75	7 x 7.25	3 Metres
Meeting Room 5	8	–	7	10	22	10	15	10	30.14	6.09 x 4.95	3 Metres
Meeting Room 6	14	24	21	20	44	18	35	36	50.75	7 x 7.25	3 Metres
Meeting Room 7	14	24	21	20	44	18	35	36	50.75	7 x 7.25	3 Metres
Boardroom	12	–	–	–	–	–	–	–	31.91	7.32 x 4.36	3 Metres
Titanic Suite (whole room)	–	–	42	52	120	n/a	110	96	132.9	8.95 x 14.85	3 Metres
Titanic 1	14	28	28	30	55	20	50	48	65.33	8.95 x 7.3	3 Metres
Titanic 2	14	28	28	30	55	20	50	48	65.33	8.95 x 7.3	3 Metres



THE OLYMPIC SUITE, CLAYTON HOTEL BELFAST



Room	Boardroom	Hollow Square	Cabaret (7)	Classroom	Theatre	U-Shape	Reception Style	Banqueting (12)	Dinner Dance (12)	Size (m2)	Dimensions	Height
Olympic Suite	–	–	210	218	550	n/a	475	324	252	372	31 x 12	5.2 max / 4.2 min
Olympic 1	18	36	72	33	135	27	100	84	60	114	9.5 x 12	5.2 max / 4.2 min
Olympic 2	18	48	80	48	200	30	175	120	96	180	15 x 12	5.2 max / 4.2 min
Olympic 3	14	30	30	21	65	21	50	72	48	84	7 x 12	5.2 max / 4.2 min

**CALL THE SALES TEAM TODAY IF YOU HAVE
BUSINESS REQUIREMENTS IN BELFAST**

+ 44 2890 271708 ✉ events.belfast@claytonhotels.com