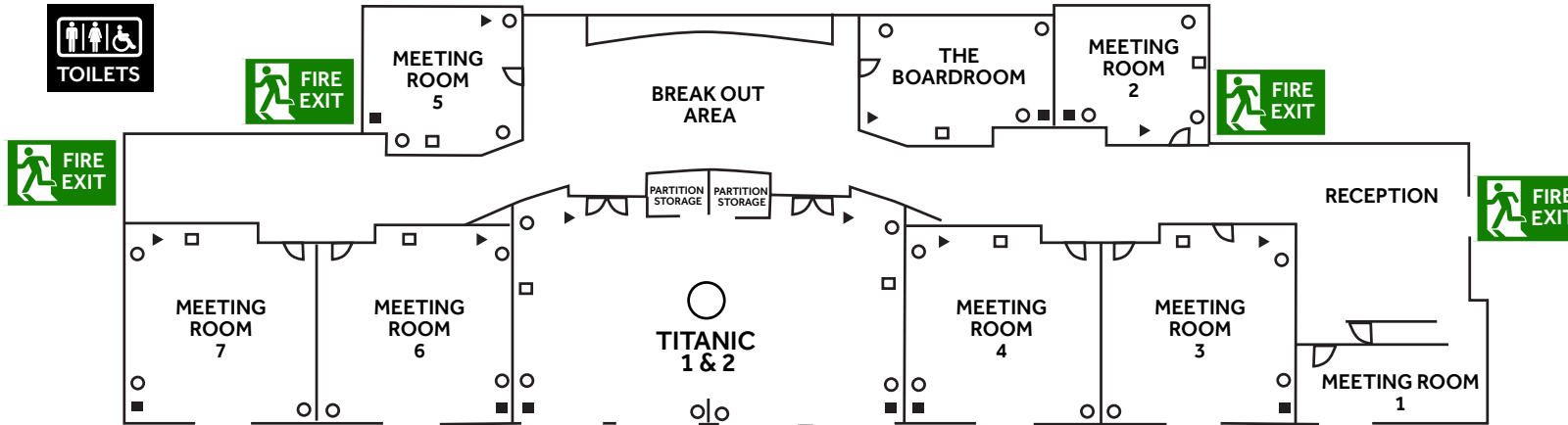
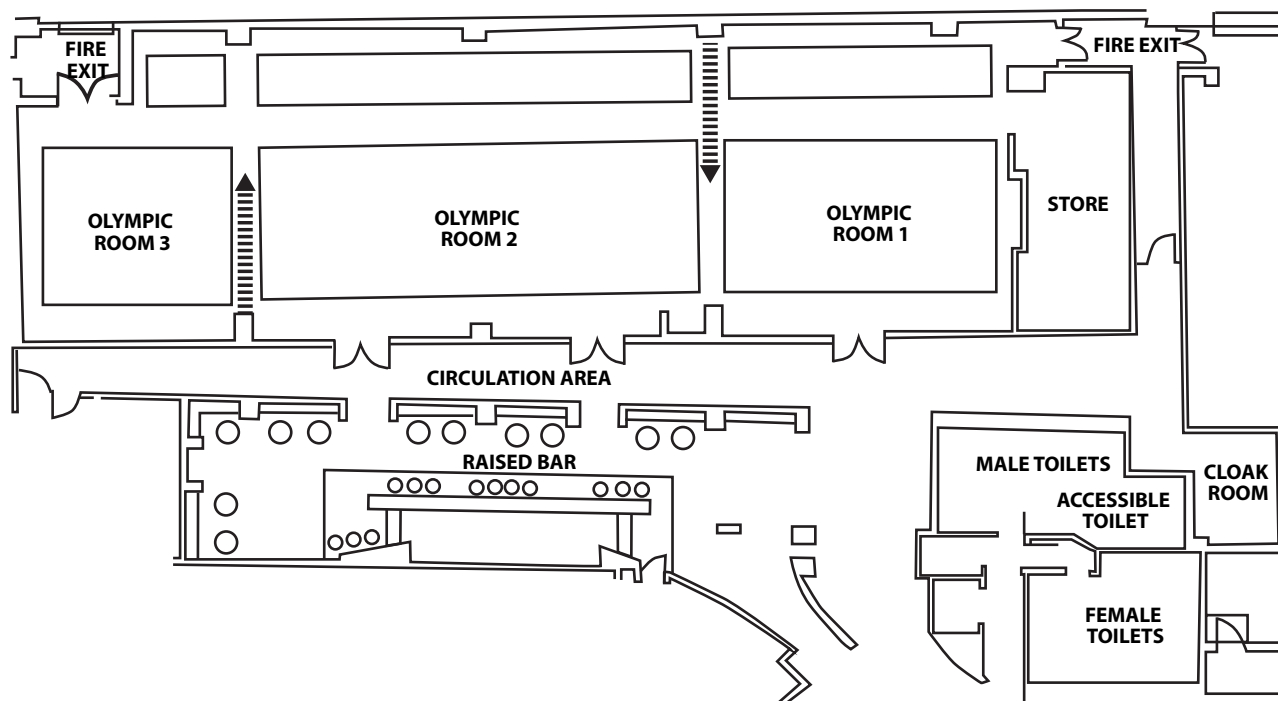


THE MEETING AND EVENTS CENTRE CLAYTON HOTEL BELFAST



Room	Theatre	Cabaret	Boardroom	U-Shape	Classroom	Dinner Dance (rounds 12)	Banquet Rounds (12) (no dancefloor or stage)	Dinner dance long tables	Reception	Dimensions (metre)	Natural Daylight
Meeting Room 1	–	–	4	–	–	–	–	–	–	2.74 x 3.50	Y
Meeting Room 2	33	–	20	14	10	–	12	–	10	6.05 x 4.95	
Meeting Room 3	65	32	34	26	27	–	36	–	30	7 x 7.25	Y
Meeting Room 4	65	32	34	26	27	–	36	–	30	7 x 7.25	Y
Meeting Room 5	30	–	18	14	10	–	12	–	20	6.09 x 4.95	
Meeting Room 6	65	32	34	26	27	–	36	–	30	7 x 7.25	Y
Meeting Room 7	65	32	34	26	27	–	36	–	30	7 x 7.25	Y
Boardroom	–	–	12	–	–	–	–	–	–	7.32 x 4.36	
Titanic Suite (whole room)	120	72	–	–	70	84	96	120	150	8.95 x 14.85	Y
Titanic 1	70	36	36	29	30	–	48	–	70	8.95 x 7.3	Y
Titanic 2	70	36	36	29	30	–	48	–	70	8.95 x 7.3	Y

THE OLYMPIC SUITE, CLAYTON HOTEL BELFAST



Room	Theatre	Cabaret	Boardroom	U-Shape	Classroom	Dinner Dance (rounds 12)	Banquet Rounds (12) (no dancefloor or stage)	Dinner dance long tables	Reception	Dimensions (metre)
Olympic Suite	550	270	–	–	218	252	324	350	600	31 x 12
Olympic 1	140	72	46	37	52	60	96	78	180	9.5 x 12
Olympic 2	200	108	58	49	88	96	144	144	280	15 x 12
Olympic 3	80	45	38	29	37	48	72	–	100x	7 x 12

**CALL THE SALES TEAM TODAY IF YOU HAVE
BUSINESS REQUIREMENTS IN BELFAST**

+ 44 2890 271708 events.belfast@claytonhotels.com